

PS8000 - SCADA

Supervisory Control & Data Acquisition

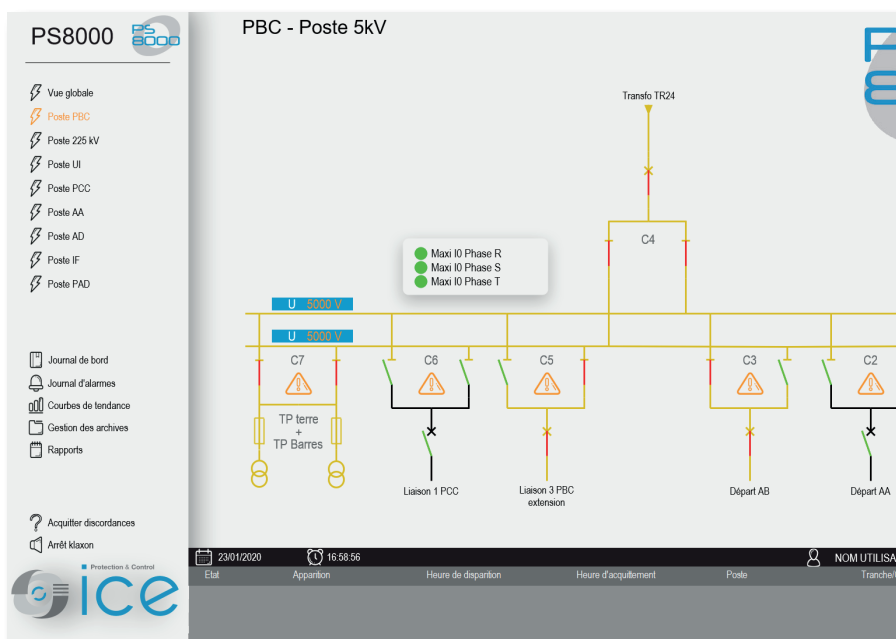


Process optimisation is at the centre of your concerns and the growing number of connected objects is an opportunity for **better management** of your **substations**.

Evolving and financially accessible, the PS8000 supervision system provides you with key data on the respective activities of each user, delivering dedicated information in real time.

Developed by ICE SAS, PS8000 is the latest version of the family of systems specialised in the supervision and control (SCADA) of electrical networks.

The PS8000 supervision system allows to identify and even eliminate the reasons of faults and by this to guarantee a safe environment. It centralises data and has advanced automation capabilities to **minimise operating costs**.



- Overview of the whole electrical network
- Trigger protection systems
- Secure command of switches

- Management of energy consumption
- Distribution of loads
- Identification and location of faults

OUR TRADEMARKS



MAIN ADVANTAGES OF PS8000

Complete system from field to operator levels

- Complete set of hardware and software complying with all electrical requirements
- Multilingual, user-friendly and easy to use

Advanced functionalities for energy management

- Full dynamic representation and coloring of the network
- Complete interface with relays and data acquisition devices
- Automation functions via an integrated PLC
- Optional high speed load shedding

Advanced solution based on Ethernet

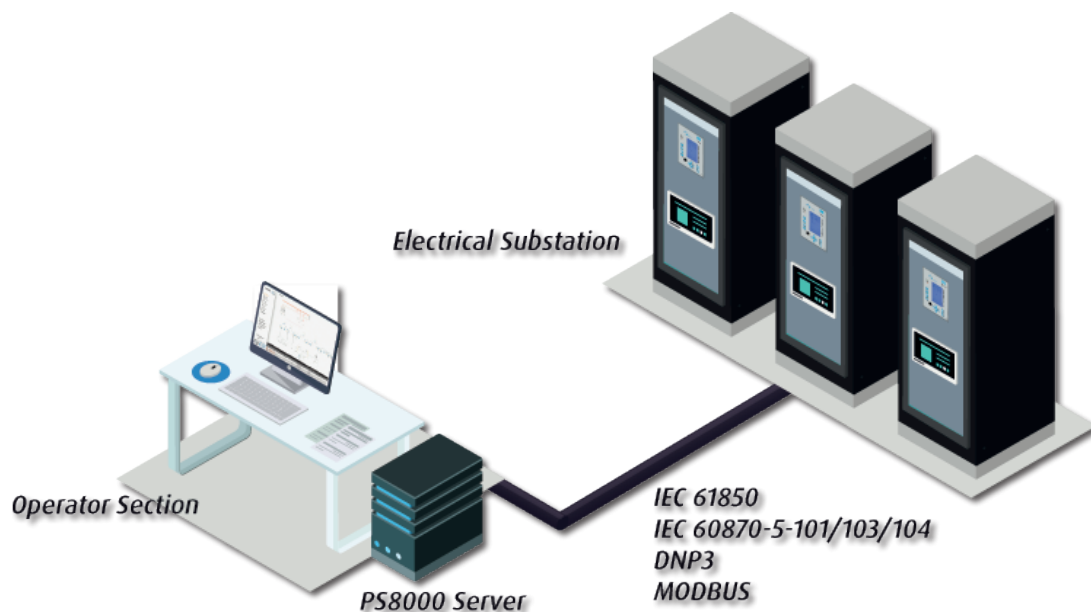
- Reliability and performance
- Industrial, evolving, adaptable solution
- Fast and secure
- Support of more than 300 protocols including IEC 60870-5 and IEC 61850

Continuity of services ensured by redundancy

- On all levels of layers of the PS8000
- From simple configuration (two servers) to more complex applications (cluster of servers in loop)

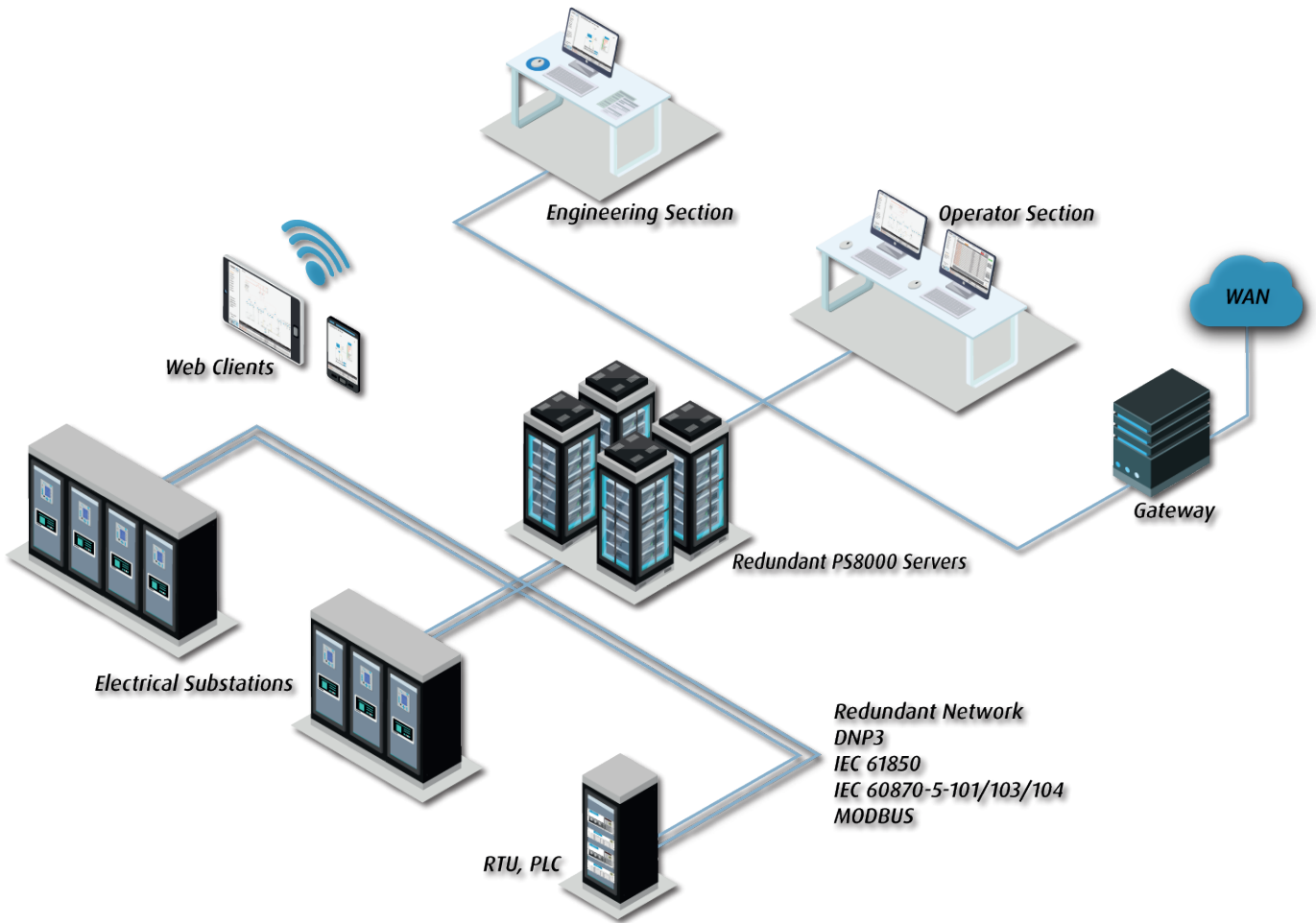
ARCHITECTURES

From simple...



ARCHITECTURES

...to redundant multi-systems

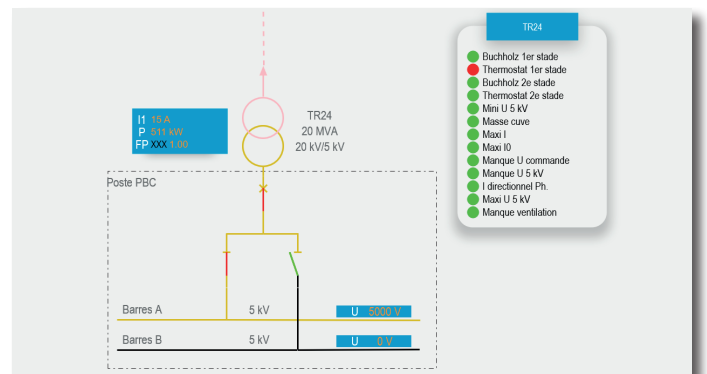


ELECTRICAL NETWORK MANAGEMENT

Real-time update of synoptics, measures and energies

Real-time overview of the state of the electrical network:

- Status or value of any aperiodic information from all sub-stations
- Measures and energies
- Display of relay parameters
- Secure command of switches



ELECTRICAL NETWORK MANAGEMENT

Event log

The event log records all events with a precision of 1 ms:

- Appearance/disappearance of events/alarms
- Follow up of operator actions (discharge, sending of command and orders, etc.)
- Messages and errors reports
- Specific editions (records, results of sorting, parameters, measures, etc.)

Heure d'apparition	Traite	Nom variable
23/01/2020 16:52:33	Modification valeur spontanée: (100.100.254.254)	IP_switch
23/01/2020 16:52:33	Modification valeur spontanée: (100.100.3.1)	IP Impr
23/01/2020 16:52:33	Modification valeur spontanée: (1)	cal_ground
23/01/2020 16:52:33	Modification valeur spontanée: (0)	false
23/01/2020 16:52:33	Modification valeur spontanée: (1)	cal_arrivee_2_225kV
23/01/2020 16:52:33	Modification valeur spontanée: (1)	cal_arrivee_1_225kV
23/01/2020 16:52:33	Modification valeur spontanée: (1)	true
23/01/2020 16:52:33	Modification valeur spontanée: (100.100.254.254)	IP_switch
23/01/2020 16:52:33	Modification valeur spontanée: (100.100.3.1)	IP Impr
23/01/2020 16:52:33	Modification valeur spontanée: (1)	cal_ground
23/01/2020 16:52:33	Modification valeur spontanée: (0)	false
23/01/2020 16:52:33	Modification valeur spontanée: (1)	cal_arrivee_2_225kV
23/01/2020 16:52:34	Modification valeur spontanée: (1)	cal_arrivee_1_225kV
23/01/2020 16:52:34	Modification valeur spontanée: (1)	true
23/01/2020 16:52:34	Modification valeur spontanée: (100.100.254.254)	IP_switch
23/01/2020 16:52:34	Modification valeur spontanée: (100.100.3.1)	IP Impr
23/01/2020 16:52:34	Modification valeur spontanée: (1)	cal_ground
23/01/2020 16:52:34	Modification valeur spontanée: (0)	false
23/01/2020 16:52:34	Modification valeur spontanée: (1)	cal_arrivee_2_225kV
23/01/2020 16:52:34	Modification valeur spontanée: (1)	cal_arrivee_1_225kV
23/01/2020 16:52:34	Modification valeur spontanée: (1)	true

Alarm and event management

- User configurable list of alarms
- The appearance of an alarm triggers an alert sound and generates an entry in the event log
- An overall list of alarms, acknowledged or not, is available

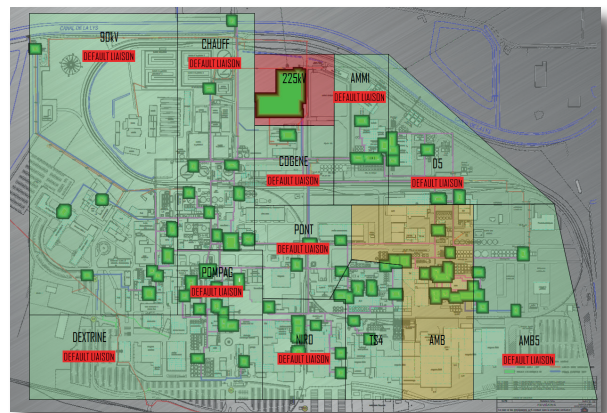
Etat d'alar...	Heure d'apparition	Heure de disparition
●	>>04/12/2019 11:41:05.732	<<
●	>>05/11/2019 10:24:42.292	<<
●	>>25/10/2019 10:52:17.665	<<
●	>>25/10/2019 10:52:17.665	<<
●	>>25/10/2019 10:52:17.665	<<
●	>>25/10/2019 10:52:17.665	<<
●	>>25/10/2019 10:52:17.665	<<
●	>>25/10/2019 10:52:17.665	<<
●	>>25/10/2019 10:52:17.665	<<
●	>>25/10/2019 10:52:17.665	<<
●	>>25/10/2019 10:52:17.665	<<
●	>>25/10/2019 10:52:17.665	<<
●	>>25/10/2019 10:52:17.665	<<
●	>>25/10/2019 10:52:17.665	<<
●	>>25/10/2019 10:52:17.665	<<
●	>>25/10/2019 10:52:17.665	<<
●	>>25/10/2019 10:52:17.665	<<

Alarms geolocation

Grouping alarms by:

- Types
- Domains
- Groups
- Emergency levels

Visualisation of faults on links.



Local PLC embedded

- Powerful graphic editor (SFC, FBD, LD)
- Text editor (ST, IL)
- Fully compatible with IEC 61131-3

